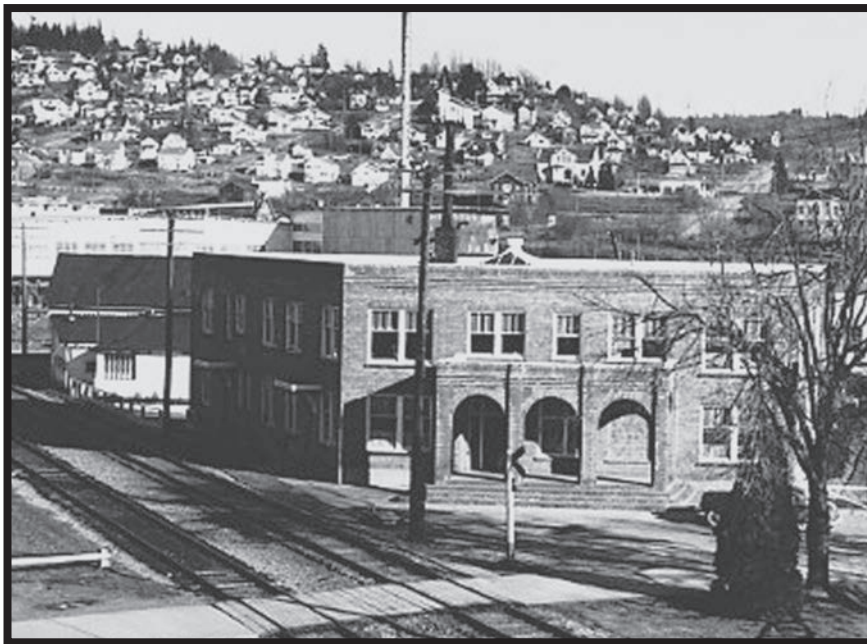


2

Fairhaven Amtrak Station

Initially after the track was re-routed along the shore, the Fairhaven station was located at the end of Harris Avenue across the street from it's current location. When the original **1903** Fairhaven Station was closed, the downtown Bellingham Station served all passengers. With the advent of Amtrak in **1971**, passenger service continued into downtown Bellingham.



Original Pacific American Fisheries Office building that was converted to the current Amtrak station complex, circa **1950**.
Photo courtesy of the Whatcom Museum.

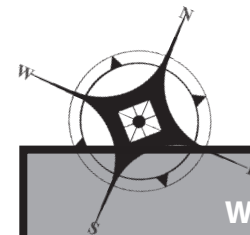


The original **1971** arrow logo is slowly being replaced with the new wave logo

In **1995**, the Bellingham Amtrak Station was relocated to Fairhaven. Renovated from the vintage PAF building, see photo on the previous page, the brick Fairhaven Amtrak Station in Bellingham also serves the Greyhound Bus Lines.



The current Amtrak station. Photo courtesy of Dick Garnick.



Walking up Harris Avenue look for the historical site-of-interest markers on the ground. Put in by the Old Fairhaven Association in 1994, these are stones located in the grass strip along the street.